

1. Introduction

Karavita Tea Factory is situated at Nivithigala and managed by Jone keels Tea small holders company Ltd. According to the request of Mr. Shiran Dias, Energy Conservation Fund was carried out the detailed measurements for four identical troughs and the details are present in this report.

The following table shows the arrangement of each trough.

Trough No. 01	With New Fan	Without VSD
Trough No. 02	With Existing Fan	Without VSD
Trough No. 03	With New Fan	With VSD
Trough No. 04	With Existing Fan	With VSD

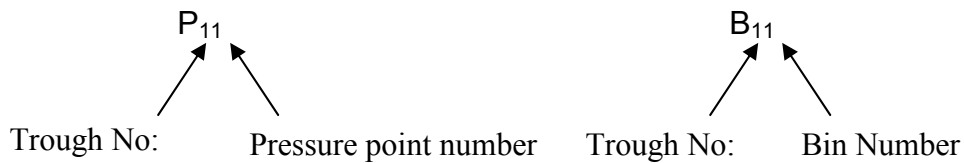
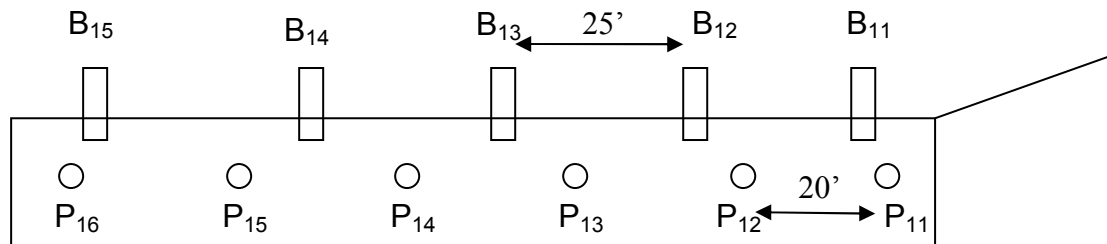
2. Testing Procedure

1. Power loggers were connected to all four troughs from 08/03/06, 8.00 pm to 09/03/06,9.30 a.m with 5 minutes logging intervals.
2. Five bins were placed along the trough and put equal amount of green tea leaves for each bins. The gap of the two bins was maintained around 25 feet. B11 is the closest bin for the fan. All the bins were weighed hourly by using electronic balance and this was practiced only for trough no. 01 & 02.
3. Dry bulb and Wet bulb temperatures were measured by using temperature loggers in two troughs.
4. Measured air velocity at the suction side of the fan by using vane type anemometer. Readings were taken in two hours interval.
5. Pressure variation was measured along the trough at six points. First point was located 10 feet far from the fan. After that the gap of two points was maintained for 20 feet. P11 is the closest point for the fan.
6. Measured the physical dimension of the suction side.
7. Collected following data from the factory officer.

- Amount of Green Tea Leaves laid for trough no 01 & 02
- Amount of Withered Leaves from trough no 01 & 02

3. Trough Arrangements

The following figure shows the testing trough arrangements.



Inlet Diameter of the Troughs – 154 cm

4. Specification of the Fans

No of Blades	6 No's	6 No's
Blade Material	Fiber glass	Alluminium
Rated Power	5 kW	15 HP

5. Instruments Used for Testing

The following instruments were used for measurements.

- Power loggers- ELOG (E 4368)
- Temperature loggers- TESTO (175 – T3)
- Vane type Anemometer
- Pressure meter
- Electronic Balance

6. Test Results

The troughs No 01, 02, 03 & 04 were selected for detail testing. New fan was installed to the trough no 01 & 03. The other two troughs (No 02 & 04) were operated with existing fan. Trough No 03 & 04 operated with Variable Speed Drives (VSD). Basic data required for the test was obtained by measuring the actual values.

6.1 Electricity Consumption of fan motor

The electricity demand variation is illustrated in the following figure.

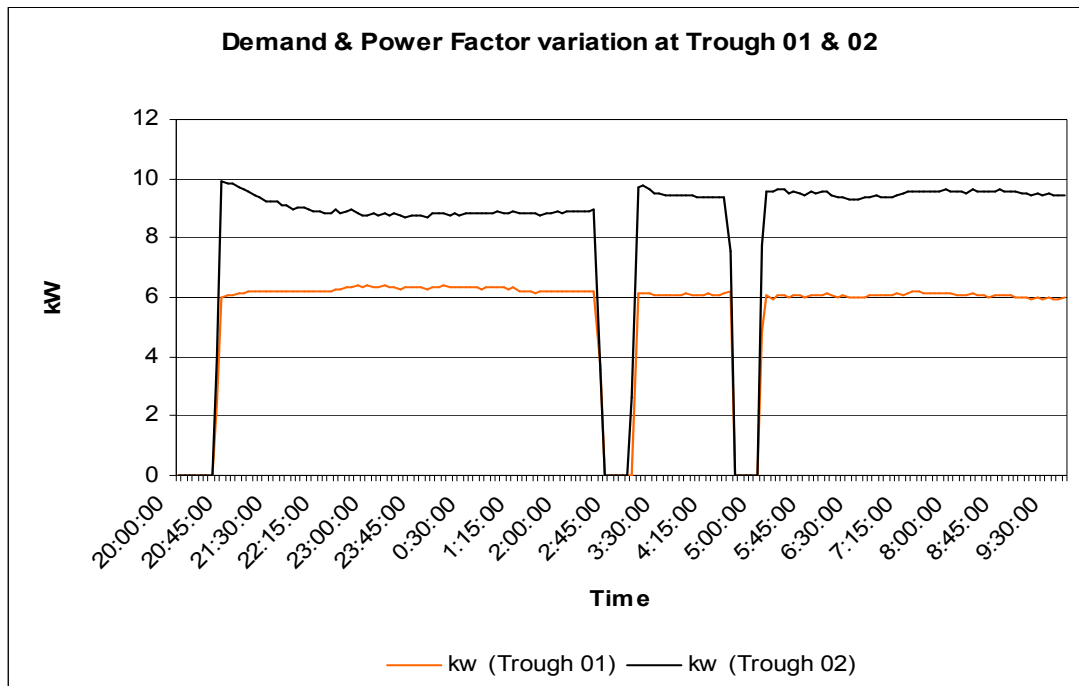


Fig.01

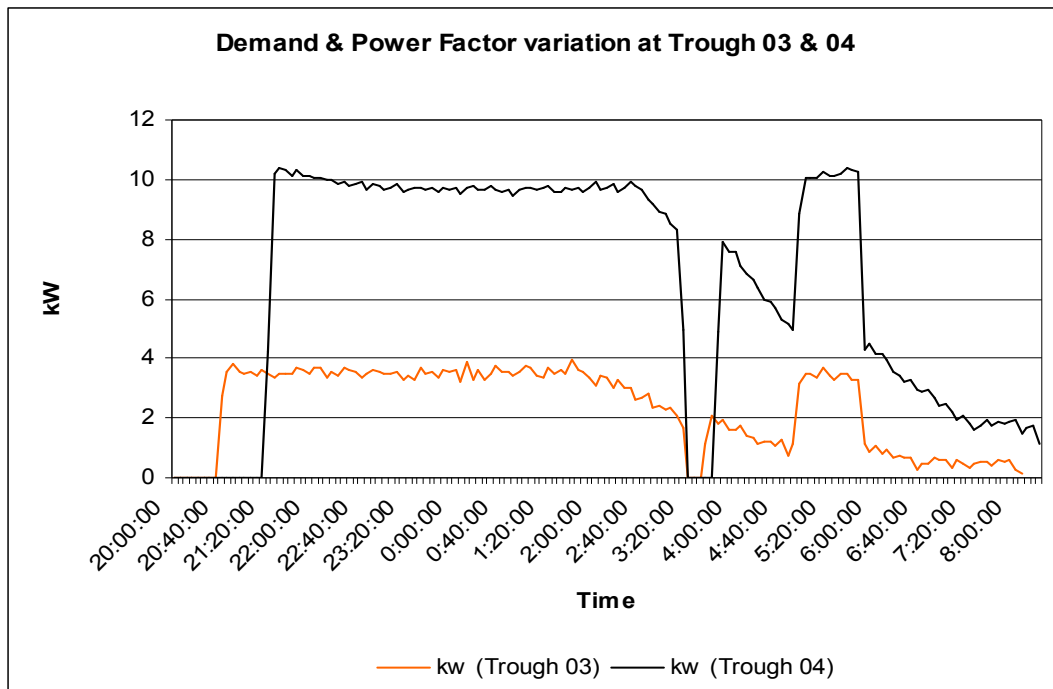


Fig. 02

6.2 Trough inside Pressure

The following graphs were shows the variation along the trough.

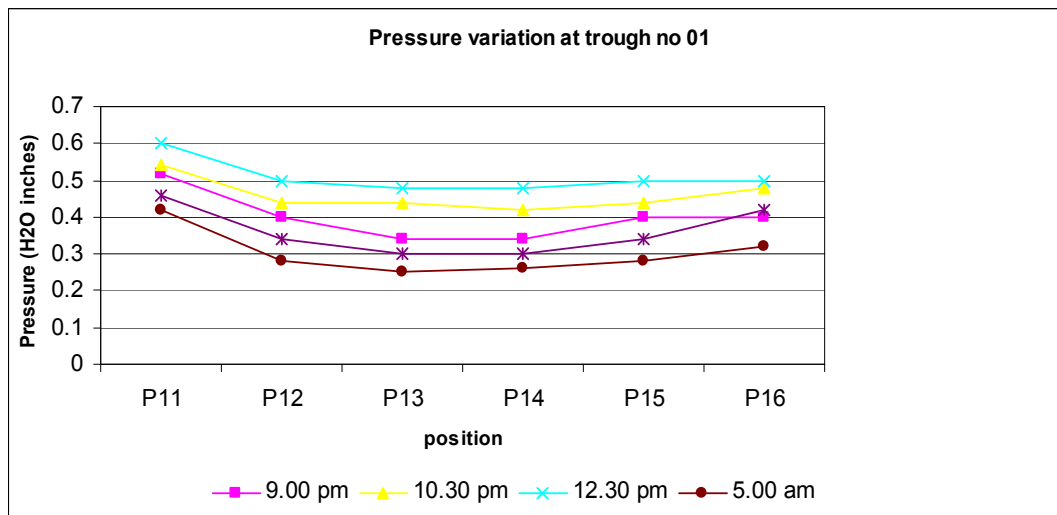


Fig.03

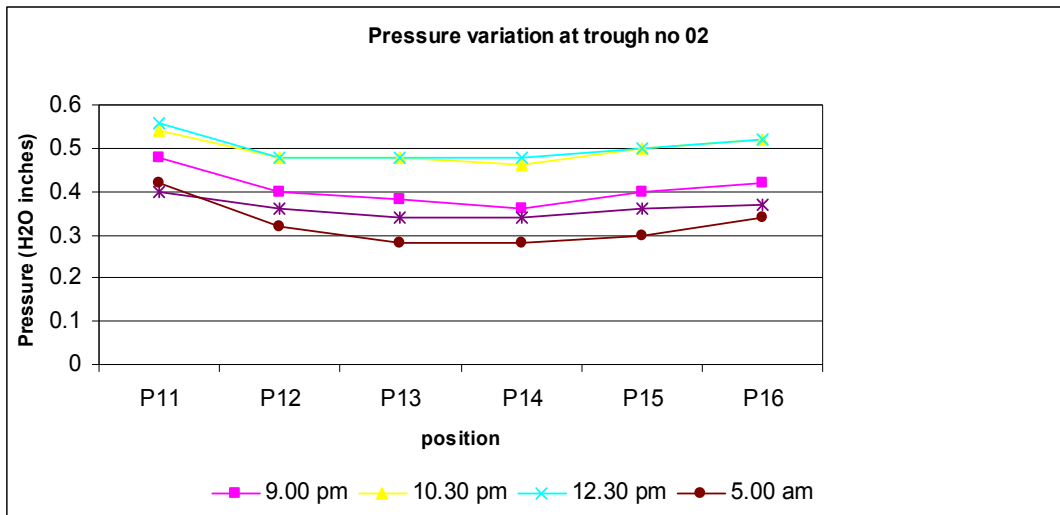


Fig. 04

6.3 Moisture Reduction Rate

The Moisture reduction rate of each bins (As a % of initial weight) are illustrated as follows.

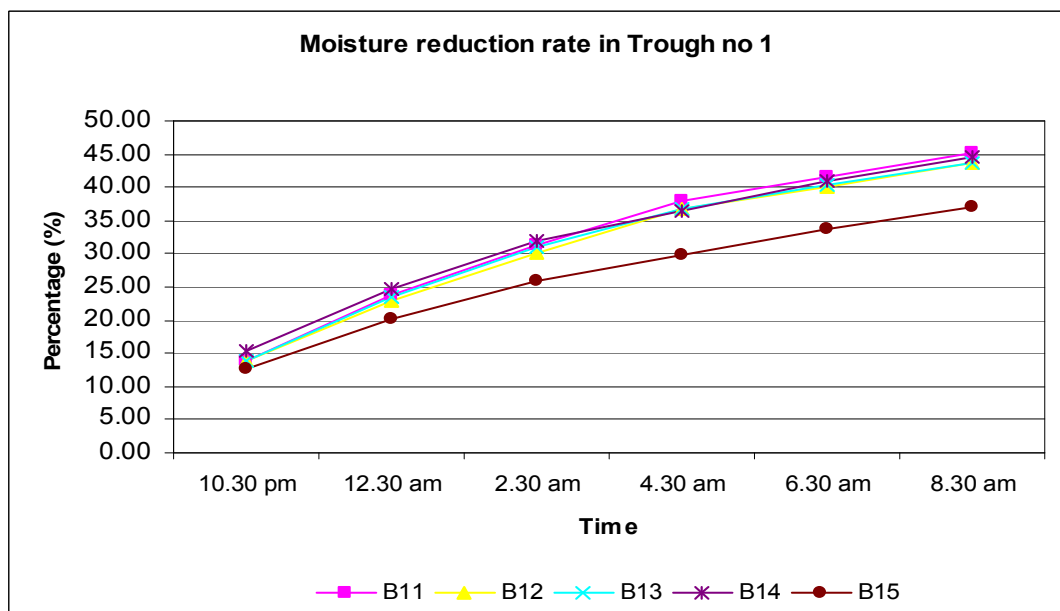


Fig. 05

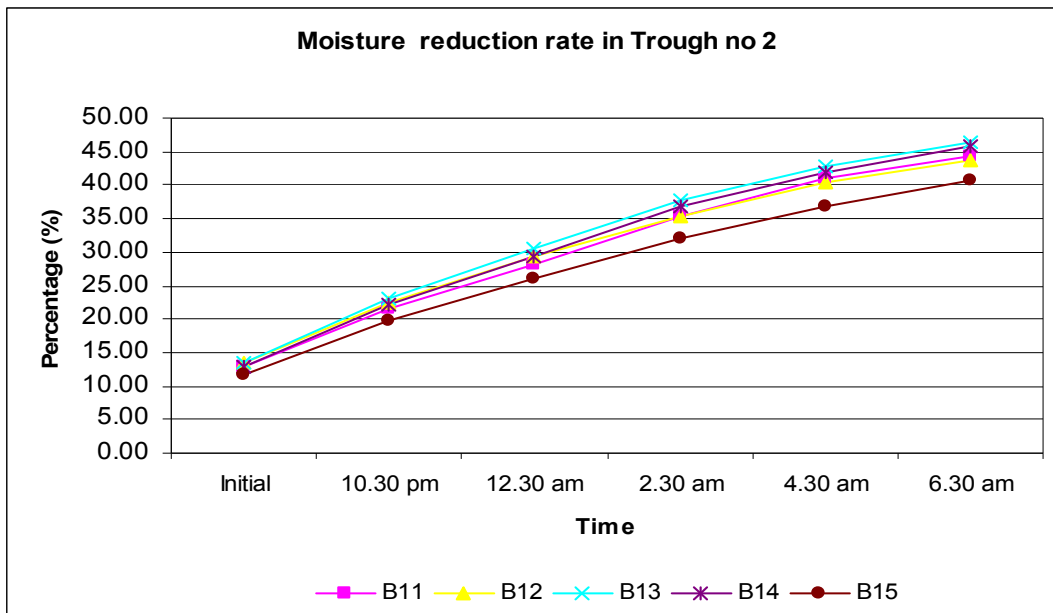


Fig. 06

Total green tea leaves for trough no. 01 = 1500 kg

Withered leaf from trough no. 01 = 812 kg

Total green tea leaves for trough no. 02 = 1500 kg

Withered leaf from trough no. 02 = 840 kg

6.4 Velocity at the Trough inlet

The following graph shows the velocity variation during the withering cycle.

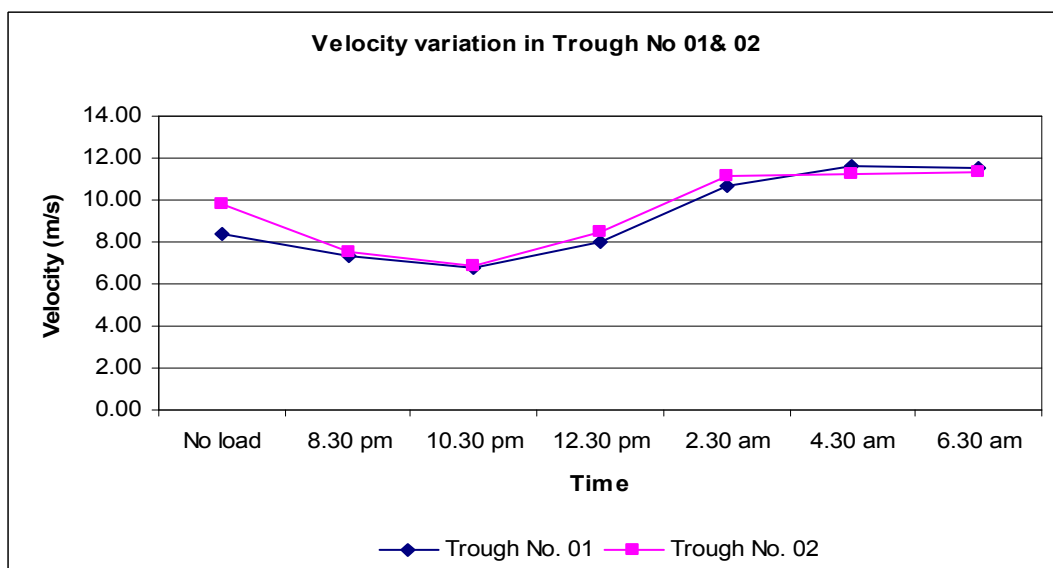


Fig. 07

6.5 Trough inside Temperature

Dry Bulb Temperature and Wet bulb Temperature variations illustrated as follows.

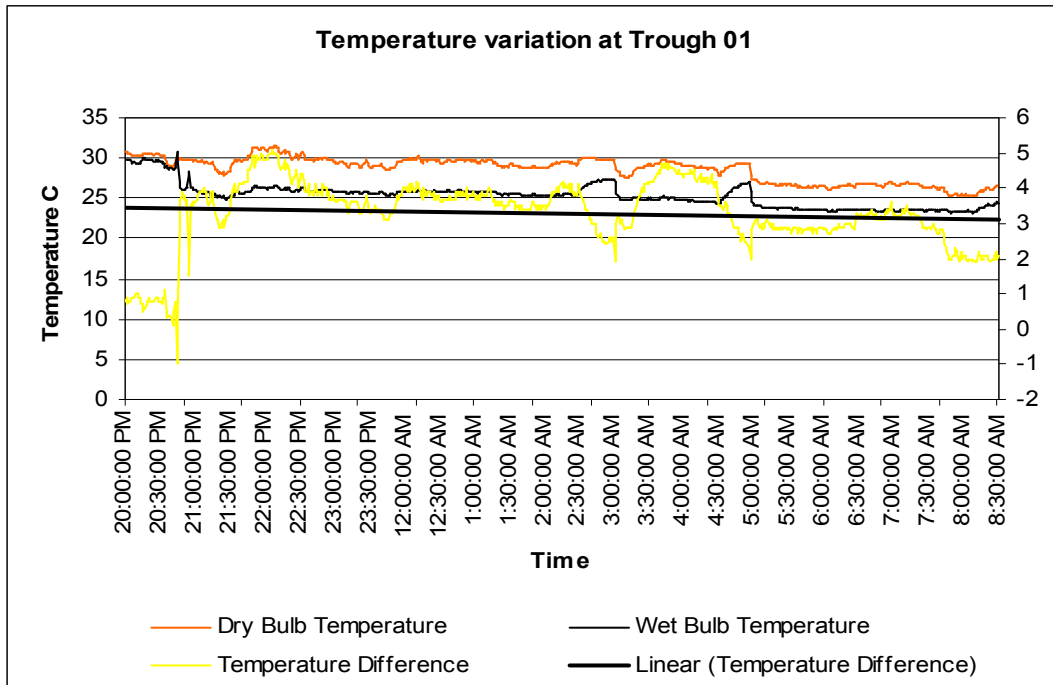


Fig. 09

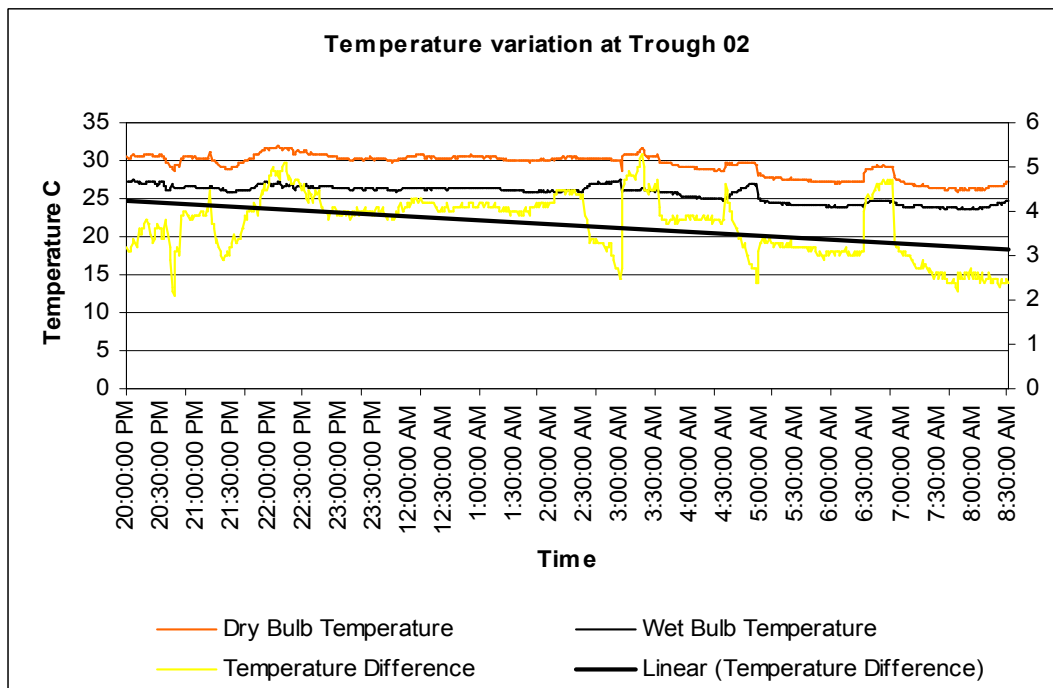


Fig. 10

7 Observations

- Power (kW) Consumption of the trough No 01 is 33.8% less than trough No 02.
- Energy (kWh) Consumption of the trough No 01 is 31% less than trough No 02.
- Pressure variations of both troughs are almost equal.
- Amount of moisture loss in trough No 02 is less than trough No 01.
- Air flow rate of trough No 01 is 3.3% less than trough No 02.

Table 1
Air Flow Rate of the Troughs

Trough No	Air flow with no Load (CFM)	Air flow with Load(Just after loading (CFM)
1	33,706	29,493
2	39,477	30,240

Table 2
Specific Energy Consumption

Trough No	Specific Energy Consumption (kWh/100 kg)
1	9.21
2	13.35

8 Comment & Recommendations

Energy saving potential of the new fan and motor is 31% less than the existing withering fan. In this case fan is new and motor also new and give combine performance. So it is subjected to do another test with existing 15 HP motor to identify the performance of new fan itself compared to older system.

Further more there are withering fans which consume less energy than this improved system. So it is better to carry out a detail study on these products and try to reduce the energy consumption further in this system.

Signed

M.M.R.Pathmasiri

B.Sc.Eng. (Hons), M.Eng., C.Eng., MIE(SL)
Director (Energy Management)

Eng.Harsha Wikramasinghe

B.Sc.Eng. (Hons), MBA., C.Eng., MIE(SL)
General Manager

Appendix

1. Electricity Data

Trough No 01 with New Fan									
Record Number	Record Date	Record End Time	Chan 5 Avg. Volt	Chan 5 Avg. Amp	Chan 5 KW Hours	Chan 5 Avg. KW	Chan 5 Avg. KVA	Chan 5 Avg. PF	Chan 5 Avg. KVAR
1	3/8/2006	18:35:00	222.6	28.07	0.48	5.756	6.249	0.92	2.412
2	3/8/2006	18:40:00	224.8	27.86	0.48	5.765	6.262	0.92	2.429
3	3/8/2006	18:45:00	225.9	11.27	0.196	2.352	2.544	0.92	0.957
4	3/8/2006	18:50:00	226.1	0	0	0	0	1	0
5	3/8/2006	18:55:00	225.5	0	0	0	0	1	0
6	3/8/2006	19:00:00	224.6	0	0	0	0	1	0
7	3/8/2006	19:05:00	225	0	0	0	0	1	0
8	3/8/2006	19:10:00	225.7	0	0	0	0	1	0
9	3/8/2006	19:15:00	224.6	0	0	0	0	1	0
10	3/8/2006	19:20:00	223.9	0	0	0	0	1	0
11	3/8/2006	19:25:00	222.4	0	0	0	0	1	0
12	3/8/2006	19:30:00	222	0	0	0	0	1	0
13	3/8/2006	19:35:00	0	0	0	0	0	1	0
14	3/8/2006	19:40:00	0	0	0	0	0	1	0
15	3/8/2006	19:45:00	0	0	0	0	0	1	0
16	3/8/2006	19:50:00	0	0	0	0	0	1	0
17	3/8/2006	19:55:00	0	0	0	0	0	1	0
18	3/8/2006	20:00:00	0	0	0	0	0	1	0
19	3/8/2006	20:05:00	0	0	0	0	0	1	0
20	3/8/2006	20:10:00	0	0	0	0	0	1	0
21	3/8/2006	20:15:00	0	0	0	0	0	1	0
22	3/8/2006	20:20:00	0	0	0	0	0	1	0
23	3/8/2006	20:25:00	0	0	0	0	0	1	0
24	3/8/2006	20:30:00	0	0	0	0	0	1	0
25	3/8/2006	20:35:00	85.1	13.69	0.2	2.399	2.913	0.82	1.647
26	3/8/2006	20:40:00	212.2	34.26	0.5	6	7.268	0.83	4.09
27	3/8/2006	20:45:00	212.5	34.5	0.504	6.052	7.331	0.83	4.113
28	3/8/2006	20:50:00	212.6	34.37	0.504	6.048	7.308	0.83	4.082
29	3/8/2006	20:55:00	213.6	34.57	0.51	6.123	7.384	0.83	4.116
30	3/8/2006	21:00:00	213.8	34.67	0.513	6.153	7.414	0.83	4.12
31	3/8/2006	21:05:00	212.4	35.2	0.519	6.232	7.476	0.83	4.115
32	3/8/2006	21:10:00	213	34.9	0.515	6.18	7.435	0.83	4.121
33	3/8/2006	21:15:00	214.6	34.88	0.519	6.229	7.484	0.83	4.143
34	3/8/2006	21:20:00	214.7	34.58	0.514	6.171	7.425	0.83	4.11
35	3/8/2006	21:25:00	214.6	34.79	0.517	6.204	7.465	0.83	4.136
36	3/8/2006	21:30:00	215.7	34.75	0.518	6.22	7.497	0.83	4.156
37	3/8/2006	21:35:00	216.5	34.52	0.517	6.204	7.473	0.83	4.138
38	3/8/2006	21:40:00	216.8	34.51	0.518	6.211	7.481	0.83	4.155
39	3/8/2006	21:45:00	216.9	34.38	0.516	6.194	7.458	0.83	4.139
40	3/8/2006	21:50:00	216.6	34.44	0.516	6.196	7.461	0.83	4.136
41	3/8/2006	21:55:00	219.7	34.28	0.518	6.221	7.532	0.83	4.225
42	3/8/2006	22:00:00	220.4	34.31	0.516	6.196	7.562	0.82	4.24
43	3/8/2006	22:05:00	221.2	34.15	0.519	6.23	7.553	0.82	4.241
44	3/8/2006	22:10:00	221.8	34.09	0.52	6.235	7.562	0.82	4.251
45	3/8/2006	22:15:00	222.5	33.87	0.517	6.201	7.537	0.82	4.262
46	3/8/2006	22:20:00	222.9	33.99	0.519	6.234	7.579	0.82	4.288
47	3/8/2006	22:25:00	224.1	34.17	0.525	6.302	7.655	0.82	4.316
48	3/8/2006	22:30:00	224.6	33.97	0.524	6.282	7.631	0.82	4.322
49	3/8/2006	22:35:00	225.4	34.19	0.528	6.336	7.706	0.82	4.367
50	3/8/2006	22:40:00	226	34.14	0.529	6.344	7.717	0.82	4.373
51	3/8/2006	22:45:00	225.9	34.28	0.532	6.389	7.742	0.83	4.353

Record Number	Record Date	Record End Time	Chan 5 Avg. Volt	Chan 5 Avg. Amp	Chan 5 KW Hours	Chan 5 Avg. KW	Chan 5 Avg. KVA	Chan 5 Avg. PF	Chan 5 Avg. KVAR
52	3/8/2006	22:50:00	224.8	34.2	0.527	6.321	7.687	0.82	4.343
53	3/8/2006	22:55:00	225	34.31	0.531	6.372	7.72	0.83	4.341
54	3/8/2006	23:00:00	225.4	34.23	0.53	6.365	7.715	0.82	4.339
55	3/8/2006	23:05:00	225.4	34.26	0.53	6.359	7.723	0.82	4.355
56	3/8/2006	23:10:00	225.9	34.27	0.531	6.374	7.742	0.82	4.363
57	3/8/2006	23:15:00	225.1	34.13	0.526	6.307	7.683	0.82	4.353
58	3/8/2006	23:20:00	225.4	34.22	0.528	6.34	7.715	0.82	4.355
59	3/8/2006	23:25:00	226.1	33.97	0.525	6.302	7.68	0.82	4.357
60	3/8/2006	23:30:00	226.4	33.98	0.526	6.315	7.695	0.82	4.37
61	3/8/2006	23:35:00	226.7	34.05	0.528	6.335	7.721	0.82	4.382
62	3/8/2006	23:40:00	226.8	34.12	0.528	6.342	7.737	0.82	4.407
63	3/8/2006	23:45:00	227	34.12	0.529	6.353	7.746	0.82	4.4
64	3/8/2006	23:50:00	227.1	33.78	0.524	6.282	7.671	0.82	4.367
65	3/8/2006	23:55:00	227.1	33.96	0.526	6.316	7.712	0.82	4.397
66	3/9/2006	0:00:00	227.8	34.07	0.53	6.363	7.761	0.82	4.408
67	3/9/2006	0:05:00	228	34.09	0.531	6.375	7.773	0.82	4.411
68	3/9/2006	0:10:00	227.8	33.96	0.527	6.33	7.736	0.82	4.408
69	3/9/2006	0:15:00	227.4	33.96	0.527	6.322	7.721	0.82	4.391
70	3/9/2006	0:20:00	227	33.93	0.526	6.312	7.702	0.82	4.383
71	3/9/2006	0:25:00	227.2	34.02	0.528	6.338	7.728	0.82	4.38
72	3/9/2006	0:30:00	226.5	34.19	0.529	6.348	7.744	0.82	4.393
73	3/9/2006	0:35:00	226.6	33.94	0.526	6.307	7.689	0.82	4.363
74	3/9/2006	0:40:00	226.2	33.93	0.524	6.293	7.674	0.82	4.353
75	3/9/2006	0:45:00	226	34.01	0.526	6.311	7.686	0.82	4.352
76	3/9/2006	0:50:00	225.3	34.19	0.528	6.336	7.705	0.82	4.346
77	3/9/2006	0:55:00	225	34.22	0.529	6.345	7.699	0.82	4.319
78	3/9/2006	1:00:00	224.6	34.14	0.526	6.314	7.67	0.82	4.314
79	3/9/2006	1:05:00	224	34.03	0.523	6.273	7.622	0.82	4.298
80	3/9/2006	1:10:00	223.6	34.33	0.526	6.315	7.675	0.82	4.326
81	3/9/2006	1:15:00	223.5	33.93	0.519	6.233	7.583	0.82	4.284
82	3/9/2006	1:20:00	223.2	33.89	0.519	6.223	7.565	0.82	4.27
83	3/9/2006	1:25:00	223.5	33.9	0.519	6.232	7.578	0.82	4.276
84	3/9/2006	1:30:00	223.6	33.5	0.512	6.141	7.49	0.82	4.257
85	3/9/2006	1:35:00	223.6	33.7	0.515	6.184	7.536	0.82	4.268
86	3/9/2006	1:40:00	223.7	33.89	0.519	6.232	7.582	0.82	4.287
87	3/9/2006	1:45:00	223.7	33.76	0.517	6.208	7.555	0.82	4.269
88	3/9/2006	1:50:00	223.8	33.87	0.519	6.223	7.58	0.82	4.286
89	3/9/2006	1:55:00	223.7	33.62	0.514	6.17	7.52	0.82	4.27
90	3/9/2006	2:00:00	223.7	33.75	0.516	6.197	7.552	0.82	4.279
91	3/9/2006	2:05:00	224	33.7	0.517	6.201	7.548	0.82	4.281
92	3/9/2006	2:10:00	224.3	33.56	0.515	6.185	7.528	0.82	4.263
93	3/9/2006	2:15:00	224.2	33.62	0.514	6.174	7.538	0.82	4.286
94	3/9/2006	2:20:00	224.4	33.57	0.515	6.18	7.533	0.82	4.28
95	3/9/2006	2:25:00	224.4	33.63	0.516	6.191	7.546	0.82	4.288
96	3/9/2006	2:30:00	224.8	20.16	0.31	3.722	4.528	0.82	2.566
97	3/9/2006	2:35:00	225.2	0	0	0	0	1	0
98	3/9/2006	2:40:00	225	0	0	0	0	1	0
99	3/9/2006	2:45:00	225.2	0	0	0	0	1	0
100	3/9/2006	2:50:00	225.3	0	0	0	0	1	0
101	3/9/2006	2:55:00	225.4	0	0	0	0	1	0
102	3/9/2006	3:00:00	225.4	0	0	0	0	1	0
103	3/9/2006	3:05:00	226.2	33.41	0.511	6.127	7.557	0.81	4.389
104	3/9/2006	3:10:00	226.3	33.51	0.513	6.154	7.584	0.81	4.393
105	3/9/2006	3:15:00	226.4	33.32	0.511	6.133	7.545	0.81	4.36
106	3/9/2006	3:20:00	226.8	33.07	0.508	6.095	7.498	0.81	4.34
107	3/9/2006	3:25:00	226.8	33.02	0.507	6.088	7.489	0.81	4.343

Record Number	Record Date	Record End Time	Chan 5 Avg. Volt	Chan 5 Avg. Amp	Chan 5 KW Hours	Chan 5 Avg. KW	Chan 5 Avg. KVA	Chan 5 Avg. PF	Chan 5 Avg. KVAR
108	3/9/2006	3:30:00	226.8	32.98	0.506	6.078	7.481	0.81	4.336
109	3/9/2006	3:35:00	226.7	33.01	0.507	6.079	7.484	0.81	4.339
110	3/9/2006	3:40:00	226.8	33.05	0.508	6.099	7.497	0.81	4.337
111	3/9/2006	3:45:00	226.6	32.98	0.507	6.087	7.475	0.81	4.317
112	3/9/2006	3:50:00	226.4	33.13	0.509	6.104	7.5	0.81	4.326
113	3/9/2006	3:55:00	226.5	33.04	0.508	6.092	7.483	0.81	4.319
114	3/9/2006	4:00:00	226.7	33.05	0.508	6.1	7.492	0.81	4.32
115	3/9/2006	4:05:00	226.5	33.02	0.507	6.085	7.48	0.81	4.321
116	3/9/2006	4:10:00	226.6	33.15	0.51	6.12	7.512	0.81	4.325
117	3/9/2006	4:15:00	226.5	33.09	0.508	6.099	7.493	0.81	4.325
118	3/9/2006	4:20:00	226.5	33.03	0.508	6.092	7.482	0.81	4.313
119	3/9/2006	4:25:00	226.4	33.1	0.51	6.115	7.494	0.82	4.307
120	3/9/2006	4:30:00	226.4	33.41	0.515	6.176	7.563	0.82	4.333
121	3/9/2006	4:35:00	227	0	0	0	0	1	0
122	3/9/2006	4:40:00	227.2	0	0	0	0	1	0
123	3/9/2006	4:45:00	227	0	0	0	0	1	0
124	3/9/2006	4:50:00	227	0	0	0	0	1	0
125	3/9/2006	4:55:00	226.7	0	0	0	0	1	0
126	3/9/2006	5:00:00	225.2	26.48	0.403	4.83	5.957	0.81	3.463
127	3/9/2006	5:05:00	224.4	33.26	0.506	6.074	7.465	0.81	4.312
128	3/9/2006	5:10:00	223.7	32.81	0.497	5.96	7.34	0.81	4.255
129	3/9/2006	5:15:00	223.6	33.09	0.504	6.044	7.399	0.82	4.248
130	3/9/2006	5:20:00	223	33.18	0.504	6.054	7.401	0.82	4.23
131	3/9/2006	5:25:00	222.3	33.17	0.502	6.029	7.374	0.82	4.215
132	3/9/2006	5:30:00	221.9	33.24	0.504	6.044	7.377	0.82	4.199
133	3/9/2006	5:35:00	221.6	33.24	0.504	6.043	7.364	0.82	4.181
134	3/9/2006	5:40:00	220.8	33.1	0.499	5.993	7.31	0.82	4.154
135	3/9/2006	5:45:00	220.6	33.44	0.506	6.075	7.376	0.82	4.16
136	3/9/2006	5:50:00	220.8	33.48	0.507	6.081	7.391	0.82	4.166
137	3/9/2006	5:55:00	222.8	33.27	0.506	6.074	7.412	0.82	4.211
138	3/9/2006	6:00:00	222.4	33.52	0.511	6.128	7.455	0.82	4.208
139	3/9/2006	6:05:00	221.9	33.42	0.508	6.093	7.417	0.82	4.204
140	3/9/2006	6:10:00	220.5	33.21	0.502	6.023	7.324	0.82	4.14
141	3/9/2006	6:15:00	219.8	33.39	0.503	6.039	7.339	0.82	4.14
142	3/9/2006	6:20:00	218.6	33.25	0.498	5.977	7.267	0.82	4.096
143	3/9/2006	6:25:00	218.4	33.49	0.503	6.031	7.314	0.82	4.103
144	3/9/2006	6:30:00	218.1	33.44	0.501	6.011	7.294	0.82	4.105
145	3/9/2006	6:35:00	218	33.41	0.5	6.005	7.282	0.82	4.093
146	3/9/2006	6:40:00	218.2	33.64	0.505	6.057	7.34	0.83	4.114
147	3/9/2006	6:45:00	218.6	33.73	0.508	6.096	7.373	0.83	4.113
148	3/9/2006	6:50:00	218.8	33.56	0.504	6.048	7.341	0.82	4.12
149	3/9/2006	6:55:00	219.2	33.46	0.504	6.043	7.334	0.82	4.115
150	3/9/2006	7:00:00	220.2	33.4	0.504	6.048	7.354	0.82	4.141
151	3/9/2006	7:05:00	221.6	33.56	0.51	6.122	7.437	0.82	4.195
152	3/9/2006	7:10:00	223.6	33.25	0.508	6.094	7.436	0.82	4.23
153	3/9/2006	7:15:00	224.7	33.43	0.514	6.165	7.513	0.82	4.262
154	3/9/2006	7:20:00	225.6	33.48	0.517	6.208	7.554	0.82	4.279
155	3/9/2006	7:25:00	225.9	33.42	0.514	6.172	7.55	0.82	4.309
156	3/9/2006	7:30:00	226.1	33.29	0.512	6.141	7.529	0.82	4.322
157	3/9/2006	7:35:00	226.8	33.18	0.511	6.137	7.525	0.82	4.318
158	3/9/2006	7:40:00	227.2	33.13	0.512	6.141	7.528	0.82	4.328
159	3/9/2006	7:45:00	227	33.19	0.512	6.144	7.535	0.82	4.337
160	3/9/2006	7:50:00	226.6	33.24	0.512	6.143	7.53	0.82	4.33
161	3/9/2006	7:55:00	226.7	33.12	0.511	6.129	7.508	0.82	4.315
162	3/9/2006	8:00:00	226.2	32.98	0.507	6.081	7.463	0.81	4.284
163	3/9/2006	8:05:00	225.5	32.96	0.505	6.057	7.434	0.81	4.281

Record Number	Record Date	Record End Time	Chan 5 Avg. Volt	Chan 5 Avg. Amp	Chan 5 KW Hours	Chan 5 Avg. KW	Chan 5 Avg. KVA	Chan 5 Avg. PF	Chan 5 Avg. KVAR
164	3/9/2006	8:10:00	226.1	32.92	0.505	6.06	7.441	0.81	4.291
165	3/9/2006	8:15:00	228.2	32.94	0.509	6.111	7.516	0.81	4.357
166	3/9/2006	8:20:00	228	32.79	0.506	6.069	7.478	0.81	4.338
167	3/9/2006	8:25:00	227.7	32.7	0.503	6.037	7.447	0.81	4.326
168	3/9/2006	8:30:00	226.9	32.71	0.502	6.019	7.422	0.81	4.309
169	3/9/2006	8:35:00	226.5	32.93	0.506	6.069	7.457	0.81	4.313
170	3/9/2006	8:40:00	226.3	32.94	0.506	6.073	7.456	0.81	4.299
171	3/9/2006	8:45:00	226.3	32.93	0.506	6.069	7.451	0.81	4.305
172	3/9/2006	8:50:00	225.5	33.08	0.507	6.085	7.46	0.82	4.294
173	3/9/2006	8:55:00	225	32.88	0.503	6.031	7.398	0.82	4.262
174	3/9/2006	9:00:00	224.4	32.87	0.502	6.023	7.375	0.82	4.231
175	3/9/2006	9:05:00	223.6	32.85	0.501	6.007	7.345	0.82	4.212
176	3/9/2006	9:10:00	222.9	32.63	0.494	5.93	7.273	0.82	4.184
177	3/9/2006	9:15:00	224	32.77	0.5	6	7.34	0.82	4.216
178	3/9/2006	9:20:00	224.3	32.57	0.495	5.946	7.306	0.81	4.224
179	3/9/2006	9:25:00	224.3	32.7	0.499	5.988	7.335	0.82	4.224
180	3/9/2006	9:30:00	224.4	32.62	0.496	5.955	7.32	0.81	4.227
181	3/9/2006	9:35:00	224.5	32.63	0.497	5.963	7.324	0.81	4.226
182	3/9/2006	9:40:00	224.2	32.66	0.498	5.97	7.323	0.82	4.219

Trough No 02

Record Number	Record Date	Record End Time	Chan 5 Avg. Volt	Chan 5 Avg. Amp	Chan 5 KW Hours	Chan 5 Avg. KW	Chan 5 Avg. KVA	Chan 5 Avg. PF	Chan 5 Avg. KVAR
1	3/8/2006	18:40:00	224.2	56.99	0.443	5.317	12.772	-0.42	-1.898
2	3/8/2006	18:45:00	224.6	55.51	0.797	9.566	12.456	0.77	7.964
3	3/8/2006	18:50:00	225.7	0	0	0	0	1	0
4	3/8/2006	18:55:00	225.3	0	0	0	0	1	0
5	3/8/2006	19:00:00	224.3	0	0	0	0	1	0
6	3/8/2006	19:05:00	224.7	0	0	0	0	1	0
7	3/8/2006	19:10:00	225.4	0	0	0	0	1	0
8	3/8/2006	19:15:00	224.3	0	0	0	0	1	0
9	3/8/2006	19:20:00	223.4	0	0	0	0	1	0
10	3/8/2006	19:25:00	222.2	0	0	0	0	1	0
11	3/8/2006	19:30:00	221.8	0	0	0	0	1	0
12	3/8/2006	19:35:00	221.3	0	0	0	0	1	0
13	3/8/2006	19:40:00	220.8	0	0	0	0	1	0
14	3/8/2006	19:45:00	220.5	0	0	0	0	1	0
15	3/8/2006	19:50:00	220	0	0	0	0	1	0
16	3/8/2006	19:55:00	219.5	0	0	0	0	1	0
17	3/8/2006	20:00:00	218.5	0	0	0	0	1	0
18	3/8/2006	20:05:00	216.4	0	0	0	0	1	0
19	3/8/2006	20:10:00	213.9	0	0	0	0	1	0
20	3/8/2006	20:15:00	213.4	0	0	0	0	1	0
21	3/8/2006	20:20:00	213.3	0	0	0	0	1	0
22	3/8/2006	20:25:00	213.3	0	0	0	0	1	0
23	3/8/2006	20:30:00	213.7	0	0	0	0	1	0
24	3/8/2006	20:35:00	213.3	25.15	0.331	3.974	5.334	0.75	3.553
25	3/8/2006	20:40:00	211.7	62.88	0.826	9.907	13.313	0.74	8.881
26	3/8/2006	20:45:00	212.1	61.72	0.82	9.84	13.09	0.75	8.619
27	3/8/2006	20:50:00	212.4	61.34	0.818	9.819	13.027	0.75	8.548
28	3/8/2006	20:55:00	213.2	59.77	0.81	9.717	12.741	0.76	8.225
29	3/8/2006	21:00:00	213.5	58.84	0.803	9.641	12.56	0.77	8.039
30	3/8/2006	21:05:00	212.1	58.69	0.795	9.545	12.449	0.77	7.968
31	3/8/2006	21:10:00	212.8	57.04	0.785	9.425	12.139	0.78	7.637

Karavita Tea Factory - Nivithigala.

Record Number	Record Date	Record End Time	Chan 5 Avg. Volt	Chan 5 Avg. Amp	Chan 5 KW Hours	Chan 5 Avg. KW	Chan 5 Avg. KVA	Chan 5 Avg. PF	Chan 5 Avg. KVAR
32	3/8/2006	21:15:00	214.3	56	0.783	9.393	11.999	0.78	7.442
33	3/8/2006	21:20:00	214.4	54.33	0.769	9.228	11.652	0.79	7.089
34	3/8/2006	21:25:00	214.1	54.37	0.768	9.213	11.64	0.79	7.086
35	3/8/2006	21:30:00	215.5	53.87	0.769	9.233	11.611	0.8	7.012
36	3/8/2006	21:35:00	215.7	53.03	0.76	9.124	11.44	0.8	6.875
37	3/8/2006	21:40:00	216.5	52.41	0.757	9.081	11.345	0.8	6.769
38	3/8/2006	21:45:00	216.2	51.76	0.75	8.994	11.188	0.8	6.625
39	3/8/2006	21:50:00	216.5	51.71	0.75	9.001	11.197	0.8	6.644
40	3/8/2006	21:55:00	219.4	50.62	0.75	9.003	11.105	0.81	6.475
41	3/8/2006	22:00:00	220	50.03	0.746	8.956	11.005	0.81	6.372
42	3/8/2006	22:05:00	220.8	49.49	0.744	8.923	10.929	0.82	6.28
43	3/8/2006	22:10:00	221.3	49.29	0.743	8.92	10.905	0.82	6.243
44	3/8/2006	22:15:00	222.1	48.52	0.738	8.854	10.778	0.82	6.121
45	3/8/2006	22:20:00	222.7	48.05	0.733	8.801	10.699	0.82	6.058
46	3/8/2006	22:25:00	223.7	48.78	0.746	8.951	10.914	0.82	6.211
47	3/8/2006	22:30:00	224.1	47.8	0.735	8.815	10.709	0.82	6.046
48	3/8/2006	22:35:00	225.4	47.79	0.739	8.869	10.771	0.82	6.06
49	3/8/2006	22:40:00	226.3	48.21	0.749	8.989	10.911	0.82	6.138
50	3/8/2006	22:45:00	224.6	47.75	0.735	8.822	10.727	0.82	6.065
51	3/8/2006	22:50:00	223.9	47.76	0.732	8.786	10.697	0.82	6.063
52	3/8/2006	22:55:00	224.2	47.76	0.732	8.785	10.711	0.82	6.084
53	3/8/2006	23:00:00	224.8	47.54	0.733	8.801	10.687	0.82	6.009
54	3/8/2006	23:05:00	224.7	47.43	0.729	8.754	10.657	0.82	6.026
55	3/8/2006	23:10:00	225.3	47.66	0.736	8.837	10.738	0.82	6.06
56	3/8/2006	23:15:00	224.8	47.48	0.732	8.78	10.672	0.82	6.022
57	3/8/2006	23:20:00	225	47.7	0.734	8.812	10.732	0.82	6.076
58	3/8/2006	23:25:00	225.6	46.89	0.728	8.734	10.581	0.83	5.924
59	3/8/2006	23:30:00	226	46.46	0.724	8.683	10.498	0.83	5.863
60	3/8/2006	23:35:00	226.1	46.83	0.728	8.733	10.586	0.83	5.934
61	3/8/2006	23:40:00	226.4	47.11	0.732	8.786	10.665	0.82	5.995
62	3/8/2006	23:45:00	226.8	46.94	0.733	8.79	10.645	0.83	5.954
63	3/8/2006	23:50:00	226.6	46.6	0.728	8.73	10.56	0.83	5.903
64	3/8/2006	23:55:00	227.1	46.99	0.733	8.801	10.669	0.82	5.981
65	3/9/2006	0:00:00	227.3	46.97	0.734	8.81	10.677	0.83	5.986
66	3/9/2006	0:05:00	227.6	47.09	0.736	8.834	10.716	0.82	6.016
67	3/9/2006	0:10:00	227.2	46.69	0.73	8.755	10.61	0.83	5.947
68	3/9/2006	0:15:00	227.1	47.15	0.735	8.82	10.708	0.82	6.024
69	3/9/2006	0:20:00	226.8	47.04	0.732	8.782	10.668	0.82	6.007
70	3/9/2006	0:25:00	226.5	47.27	0.735	8.816	10.71	0.82	6.037
71	3/9/2006	0:30:00	226.4	47.55	0.737	8.846	10.766	0.82	6.091
72	3/9/2006	0:35:00	225.7	47.73	0.737	8.849	10.772	0.82	6.1
73	3/9/2006	0:40:00	225.9	47.6	0.737	8.844	10.753	0.82	6.077
74	3/9/2006	0:45:00	225.4	47.67	0.735	8.819	10.744	0.82	6.094
75	3/9/2006	0:50:00	224.4	48.13	0.737	8.838	10.801	0.82	6.165
76	3/9/2006	0:55:00	224.2	48.51	0.741	8.893	10.876	0.82	6.224
77	3/9/2006	1:00:00	224	48.29	0.738	8.856	10.82	0.82	6.163
78	3/9/2006	1:05:00	223.6	48.44	0.737	8.847	10.831	0.82	6.206
79	3/9/2006	1:10:00	223.4	48.92	0.741	8.888	10.93	0.81	6.311
80	3/9/2006	1:15:00	223.4	48.37	0.736	8.834	10.806	0.82	6.185
81	3/9/2006	1:20:00	222.7	48.45	0.734	8.81	10.791	0.82	6.19
82	3/9/2006	1:25:00	223.1	48.59	0.737	8.847	10.84	0.82	6.22
83	3/9/2006	1:30:00	223.1	48.35	0.735	8.823	10.787	0.82	6.163
84	3/9/2006	1:35:00	223.3	48.1	0.732	8.789	10.74	0.82	6.122
85	3/9/2006	1:40:00	223.4	48.39	0.737	8.846	10.813	0.82	6.184
86	3/9/2006	1:45:00	223.3	48.34	0.737	8.843	10.795	0.82	6.149
87	3/9/2006	1:50:00	223.5	48.57	0.74	8.875	10.855	0.82	6.2

Karavita Tea Factory - Nivithigala.

Record Number	Record Date	Record End Time	Chan 5 Avg. Volt	Chan 5 Avg. Amp	Chan 5 KW Hours	Chan 5 Avg. KW	Chan 5 Avg. KVA	Chan 5 Avg. PF	Chan 5 Avg. KVAR
88	3/9/2006	1:55:00	223.3	48.52	0.738	8.853	10.832	0.82	6.198
89	3/9/2006	2:00:00	223.4	48.81	0.742	8.903	10.902	0.82	6.259
90	3/9/2006	2:05:00	223.6	48.74	0.74	8.883	10.896	0.82	6.257
91	3/9/2006	2:10:00	223.8	48.65	0.741	8.896	10.885	0.82	6.227
92	3/9/2006	2:15:00	223.8	48.51	0.74	8.88	10.855	0.82	6.203
93	3/9/2006	2:20:00	223.9	48.66	0.742	8.908	10.895	0.82	6.227
94	3/9/2006	2:25:00	224	49.15	0.748	8.974	11.009	0.82	6.338
95	3/9/2006	2:30:00	224.6	19.71	0.3	3.6	4.419	0.81	2.543
96	3/9/2006	2:35:00	225	0	0	0	0	1	0
97	3/9/2006	2:40:00	224.8	0	0	0	0	1	0
98	3/9/2006	2:45:00	225	0	0	0	0	1	0
99	3/9/2006	2:50:00	225	0	0	0	0	1	0
100	3/9/2006	2:55:00	225.1	0	0	0	0	1	0
101	3/9/2006	3:00:00	225	18.88	0.22	2.64	4.252	0.62	3.319
102	3/9/2006	3:05:00	225.9	53.61	0.811	9.735	12.112	0.8	7.17
103	3/9/2006	3:10:00	226	53.7	0.812	9.748	12.136	0.8	7.181
104	3/9/2006	3:15:00	226.2	53.05	0.806	9.672	11.999	0.81	7.062
105	3/9/2006	3:20:00	226.4	51.98	0.794	9.525	11.766	0.81	6.874
106	3/9/2006	3:25:00	226.4	51.75	0.792	9.499	11.715	0.81	6.828
107	3/9/2006	3:30:00	226.4	51.49	0.788	9.459	11.661	0.81	6.79
108	3/9/2006	3:35:00	226.4	51.36	0.788	9.454	11.625	0.81	6.732
109	3/9/2006	3:40:00	226.5	51.38	0.787	9.444	11.636	0.81	6.769
110	3/9/2006	3:45:00	226	51.36	0.785	9.425	11.609	0.81	6.74
111	3/9/2006	3:50:00	225.9	51.43	0.785	9.422	11.616	0.81	6.76
112	3/9/2006	3:55:00	226	51.33	0.784	9.414	11.601	0.81	6.739
113	3/9/2006	4:00:00	226.1	50.99	0.782	9.381	11.53	0.81	6.681
114	3/9/2006	4:05:00	226.1	50.98	0.781	9.376	11.529	0.81	6.671
115	3/9/2006	4:10:00	226.2	50.77	0.78	9.357	11.485	0.81	6.624
116	3/9/2006	4:15:00	226.1	50.93	0.779	9.353	11.515	0.81	6.67
117	3/9/2006	4:20:00	226.2	51	0.782	9.381	11.536	0.81	6.677
118	3/9/2006	4:25:00	225.9	50.97	0.78	9.363	11.513	0.81	6.663
119	3/9/2006	4:30:00	226	41.2	0.627	7.528	9.301	0.81	5.423
120	3/9/2006	4:35:00	227	0	0	0	0	1	0
121	3/9/2006	4:40:00	227	0	0	0	0	1	0
122	3/9/2006	4:45:00	226.8	0	0	0	0	1	0
123	3/9/2006	4:50:00	226.8	0	0	0	0	1	0
124	3/9/2006	4:55:00	226.2	0	0	0	0	1	0
125	3/9/2006	5:00:00	224.8	42.97	0.645	7.738	9.646	0.8	5.733
126	3/9/2006	5:05:00	223.9	53.25	0.798	9.574	11.923	0.8	7.082
127	3/9/2006	5:10:00	223.1	53.43	0.795	9.542	11.923	0.8	7.113
128	3/9/2006	5:15:00	223.1	54.33	0.805	9.655	12.119	0.8	7.295
129	3/9/2006	5:20:00	222.6	54.47	0.804	9.649	12.124	0.8	7.301
130	3/9/2006	5:25:00	221.9	53.53	0.792	9.5	11.88	0.8	7.1
131	3/9/2006	5:30:00	221.6	54.15	0.796	9.558	12	0.8	7.232
132	3/9/2006	5:35:00	221.2	54.15	0.794	9.524	11.976	0.8	7.229
133	3/9/2006	5:40:00	220.5	53.67	0.788	9.458	11.832	0.8	7.078
134	3/9/2006	5:45:00	220.1	54.73	0.796	9.547	12.046	0.79	7.319
135	3/9/2006	5:50:00	220.4	54.33	0.793	9.516	11.972	0.79	7.245
136	3/9/2006	5:55:00	222.2	53.83	0.796	9.546	11.959	0.8	7.159
137	3/9/2006	6:00:00	221.9	54	0.796	9.553	11.985	0.8	7.199
138	3/9/2006	6:05:00	221.4	53.29	0.787	9.448	11.798	0.8	7.026
139	3/9/2006	6:10:00	220	53.5	0.783	9.396	11.767	0.8	7.038
140	3/9/2006	6:15:00	219.3	53.63	0.782	9.382	11.763	0.8	7.052
141	3/9/2006	6:20:00	218.2	53.57	0.777	9.319	11.687	0.8	7.004
142	3/9/2006	6:25:00	217.8	53.91	0.778	9.334	11.742	0.79	7.089
143	3/9/2006	6:30:00	217.6	53.7	0.775	9.304	11.688	0.8	7.041

Record Number	Record Date	Record End Time	Chan 5 Avg. Volt	Chan 5 Avg. Amp	Chan 5 KW Hours	Chan 5 Avg. KW	Chan 5 Avg. KVA	Chan 5 Avg. PF	Chan 5 Avg. KVAR
144	3/9/2006	6:35:00	217.7	54.01	0.779	9.345	11.758	0.79	7.093
145	3/9/2006	6:40:00	217.7	54.36	0.782	9.379	11.835	0.79	7.179
146	3/9/2006	6:45:00	218.1	54.54	0.785	9.42	11.897	0.79	7.229
147	3/9/2006	6:50:00	218.6	54.04	0.783	9.394	11.811	0.8	7.121
148	3/9/2006	6:55:00	218.8	53.71	0.781	9.368	11.751	0.8	7.057
149	3/9/2006	7:00:00	219.7	53.49	0.783	9.396	11.753	0.8	7.023
150	3/9/2006	7:05:00	221.3	53.28	0.786	9.437	11.788	0.8	7.03
151	3/9/2006	7:10:00	223.4	52.91	0.792	9.502	11.82	0.8	6.986
152	3/9/2006	7:15:00	224.4	52.84	0.798	9.576	11.857	0.81	6.953
153	3/9/2006	7:20:00	224.8	53.01	0.801	9.606	11.915	0.81	7.007
154	3/9/2006	7:25:00	225.8	52.52	0.799	9.585	11.86	0.81	6.936
155	3/9/2006	7:30:00	226.2	52.1	0.796	9.551	11.785	0.81	6.859
156	3/9/2006	7:35:00	226.4	52.01	0.796	9.554	11.777	0.81	6.839
157	3/9/2006	7:40:00	226.8	52.14	0.799	9.591	11.824	0.81	6.861
158	3/9/2006	7:45:00	227	52.15	0.8	9.599	11.838	0.81	6.894
159	3/9/2006	7:50:00	226.3	52.8	0.806	9.672	11.948	0.81	6.981
160	3/9/2006	7:55:00	226.2	52.06	0.796	9.556	11.777	0.81	6.85
161	3/9/2006	8:00:00	225.9	52.16	0.796	9.551	11.782	0.81	6.853
162	3/9/2006	8:05:00	225.2	52.43	0.796	9.549	11.805	0.81	6.893
163	3/9/2006	8:10:00	225.7	51.91	0.793	9.513	11.717	0.81	6.799
164	3/9/2006	8:15:00	227.7	52.22	0.804	9.649	11.891	0.81	6.901
165	3/9/2006	8:20:00	227.7	51.65	0.798	9.58	11.76	0.81	6.785
166	3/9/2006	8:25:00	227.3	51.76	0.797	9.569	11.764	0.81	6.803
167	3/9/2006	8:30:00	226.4	51.85	0.795	9.542	11.738	0.81	6.8
168	3/9/2006	8:35:00	226.1	52.1	0.796	9.557	11.779	0.81	6.865
169	3/9/2006	8:40:00	226	52.44	0.801	9.607	11.853	0.81	6.908
170	3/9/2006	8:45:00	225.8	52.18	0.797	9.562	11.78	0.81	6.861
171	3/9/2006	8:50:00	225.2	52.43	0.797	9.559	11.807	0.81	6.903
172	3/9/2006	8:55:00	224.5	52.55	0.796	9.546	11.799	0.81	6.906
173	3/9/2006	9:00:00	223.9	52.52	0.792	9.501	11.762	0.81	6.901
174	3/9/2006	9:05:00	223.2	52.6	0.79	9.477	11.741	0.81	6.913
175	3/9/2006	9:10:00	222.3	52.48	0.785	9.423	11.667	0.81	6.863
176	3/9/2006	9:15:00	223.7	52.75	0.793	9.512	11.8	0.81	6.963
177	3/9/2006	9:20:00	223.6	52.09	0.786	9.433	11.649	0.81	6.814
178	3/9/2006	9:25:00	223.8	52.67	0.794	9.527	11.79	0.81	6.929
179	3/9/2006	9:30:00	224	52.2	0.788	9.461	11.695	0.81	6.849
180	3/9/2006	9:35:00	224.1	52.11	0.789	9.468	11.68	0.81	6.82
181	3/9/2006	9:40:00	223.9	52.27	0.789	9.47	11.702	0.81	6.856

Trough No 03									
Record Number	Record Date	Record End Time	Chan 5 Avg. Volt	Chan 5 Avg. Amp	Chan 5 KW Hours	Chan 5 Avg. KW	Chan 5 Avg. KVA	Chan 5 Avg. PF	Chan 5 Avg. KVAR
1	3/8/2006	19:00:00	224.3	41.53	0.151	1.817	9.315	0.2	0.114
2	3/8/2006	19:05:00	224	38.67	0.24	2.875	8.659	0.33	0.056
3	3/8/2006	19:10:00	225.5	4.19	0.001	0.007	0.946	0.01	0.001
4	3/8/2006	19:15:00	224.3	4.32	0.001	0.013	0.969	-0.01	-0.013
5	3/8/2006	19:20:00	223.5	2.87	0	-0.008	0.641	0.01	-0.01
6	3/8/2006	19:25:00	222	5.19	0	0.002	1.152	0	-0.011
7	3/8/2006	19:30:00	221.6	3.61	-0.001	-0.014	0.801	0.02	-0.006
8	3/8/2006	19:35:00	221.2	4.88	0.003	0.034	1.081	0.03	0.005
9	3/8/2006	19:40:00	220.8	4.25	0	-0.004	0.939	0	0.014
10	3/8/2006	19:45:00	220.4	2.33	0.001	0.015	0.513	-0.03	-0.008
11	3/8/2006	19:50:00	219.9	5.05	0	0.001	1.11	0	0.007
12	3/8/2006	19:55:00	219.4	3.1	0	0.003	0.68	0	0.001

Record Number	Record Date	Record End Time	Chan 5 Avg. Volt	Chan 5 Avg. Amp	Chan 5 KW Hours	Chan 5 Avg. KW	Chan 5 Avg. KVA	Chan 5 Avg. PF	Chan 5 Avg. KVAR
13	3/8/2006	20:00:00	218.6	2.13	0	-0.004	0.466	-0.01	0.008
14	3/8/2006	20:05:00	216.5	4.67	-0.001	-0.016	1.01	-0.02	0.003
15	3/8/2006	20:10:00	213.9	1.92	0	-0.007	0.413	0.02	-0.006
16	3/8/2006	20:15:00	213.2	1.99	-0.001	-0.016	0.423	-0.04	0.01
17	3/8/2006	20:20:00	213.2	2.67	0	0.002	0.569	0	-0.001
18	3/8/2006	20:25:00	213.4	3.88	0	-0.004	0.828	-0.01	0.005
19	3/8/2006	20:30:00	213.7	2.36	0	0.005	0.504	0.01	0.005
20	3/8/2006	20:35:00	213.5	2.55	0	-0.004	0.545	-0.01	0.01
21	3/8/2006	20:40:00	211.7	34.47	0.228	2.741	7.296	-0.38	-0.043
22	3/8/2006	20:45:00	212.1	37.41	0.293	3.52	7.933	-0.44	-0.044
23	3/8/2006	20:50:00	212.2	41	0.319	3.823	8.7	0.44	0.098
24	3/8/2006	20:55:00	213.1	39.84	0.294	3.533	8.486	-0.42	-0.215
25	3/8/2006	21:00:00	213.3	39.11	0.289	3.466	8.343	-0.42	-0.145
26	3/8/2006	21:05:00	212.3	39.14	0.294	3.526	8.308	-0.42	-0.291
27	3/8/2006	21:10:00	213	39.84	0.284	3.408	8.481	-0.4	-0.125
28	3/8/2006	21:15:00	214	39.42	0.3	3.595	8.435	-0.43	-0.177
29	3/8/2006	21:20:00	214.3	40.44	0.29	3.481	8.664	-0.4	-0.089
30	3/8/2006	21:25:00	214.3	42.04	0.28	3.359	9.004	-0.37	-0.122
31	3/8/2006	21:30:00	215.1	42.95	0.289	3.473	9.235	0.38	0.22
32	3/8/2006	21:35:00	215.9	43.21	0.293	3.519	9.326	0.38	0.024
33	3/8/2006	21:40:00	216.3	43.24	0.289	3.464	9.351	-0.37	-0.096
34	3/8/2006	21:45:00	216.2	43.66	0.307	3.682	9.435	-0.39	-0.17
35	3/8/2006	21:50:00	216.1	44.41	0.3	3.601	9.593	-0.38	-0.305
36	3/8/2006	21:55:00	219.2	43.15	0.29	3.484	9.458	-0.37	-0.396
37	3/8/2006	22:00:00	220.2	42.51	0.305	3.656	9.356	-0.39	-0.26
38	3/8/2006	22:05:00	220.8	49.08	0.309	3.707	10.831	0.34	0.116
39	3/8/2006	22:10:00	221.3	40.48	0.28	3.354	8.955	-0.37	-0.194
40	3/8/2006	22:15:00	222	42.07	0.294	3.528	9.336	-0.38	-0.025
41	3/8/2006	22:20:00	222.7	40.64	0.284	3.407	9.047	-0.38	-0.331
42	3/8/2006	22:25:00	223.2	42.09	0.307	3.687	9.392	-0.39	-0.158
43	3/8/2006	22:30:00	224.1	41.17	0.303	3.63	9.22	-0.39	-0.26
44	3/8/2006	22:35:00	225.3	42.3	0.296	3.551	9.526	-0.37	-0.167
45	3/8/2006	22:40:00	225.6	41.66	0.28	3.356	9.395	-0.36	-0.009
46	3/8/2006	22:45:00	225.1	40.4	0.293	3.519	9.091	-0.39	-0.152
47	3/8/2006	22:50:00	224	42.43	0.301	3.61	9.504	-0.38	-0.142
48	3/8/2006	22:55:00	224.3	40.39	0.299	3.586	9.056	0.4	0.032
49	3/8/2006	23:00:00	224.8	41	0.29	3.482	9.215	-0.38	-0.297
50	3/8/2006	23:05:00	225.3	39.54	0.292	3.507	8.906	-0.39	-0.087
51	3/8/2006	23:10:00	224.9	40.84	0.297	3.559	9.181	-0.39	-0.159
52	3/8/2006	23:15:00	224.6	39.94	0.273	3.278	8.967	0.37	0.11
53	3/8/2006	23:20:00	225.1	41.03	0.287	3.442	9.232	0.37	0.006
54	3/8/2006	23:25:00	225.5	41.18	0.274	3.288	9.282	-0.35	-0.162
55	3/8/2006	23:30:00	225.9	40.05	0.308	3.701	9.047	-0.41	-0.098
56	3/8/2006	23:35:00	226.1	40.95	0.291	3.489	9.259	-0.38	-0.248
57	3/8/2006	23:40:00	226.2	40.02	0.295	3.544	9.051	-0.39	-0.329
58	3/8/2006	23:45:00	226.5	39.91	0.281	3.372	9.035	-0.37	-0.087
59	3/8/2006	23:50:00	226.7	40.48	0.304	3.644	9.175	-0.4	-0.07
60	3/8/2006	23:55:00	227	39.86	0.298	3.572	9.048	-0.39	-0.177
61	3/9/2006	0:00:00	227.1	41.49	0.303	3.633	9.419	0.39	0.228
62	3/9/2006	0:05:00	227	39.69	0.267	3.198	9.008	0.36	0.034
63	3/9/2006	0:10:00	227.7	41.73	0.327	3.921	9.498	0.41	0.083
64	3/9/2006	0:15:00	227	39.99	0.276	3.309	9.074	-0.36	-0.129
65	3/9/2006	0:20:00	226.6	42.02	0.299	3.592	9.52	-0.38	-0.251
66	3/9/2006	0:25:00	226.4	40.22	0.271	3.254	9.101	-0.36	-0.156
67	3/9/2006	0:30:00	226.2	40.86	0.29	3.477	9.237	-0.38	-0.112
68	3/9/2006	0:35:00	226	41.31	0.316	3.786	9.332	0.41	0.015

Karavita Tea Factory - Nivithigala.

Record Number	Record Date	Record End Time	Chan 5 Avg. Volt	Chan 5 Avg. Amp	Chan 5 KW Hours	Chan 5 Avg. KW	Chan 5 Avg. KVA	Chan 5 Avg. PF	Chan 5 Avg. KVAR
69	3/9/2006	0:40:00	225.9	40.57	0.296	3.557	9.164	-0.39	-0.033
70	3/9/2006	0:45:00	225.2	41.32	0.293	3.521	9.303	-0.38	-0.251
71	3/9/2006	0:50:00	224.4	39.27	0.287	3.446	8.81	-0.39	-0.263
72	3/9/2006	0:55:00	223.9	40.34	0.294	3.531	9.027	0.39	0.026
73	3/9/2006	1:00:00	223.5	41.6	0.313	3.755	9.295	-0.4	-0.232
74	3/9/2006	1:05:00	223.6	41.82	0.308	3.698	9.35	-0.4	-0.026
75	3/9/2006	1:10:00	223.8	41.42	0.285	3.42	9.266	-0.37	-0.181
76	3/9/2006	1:15:00	223	40.24	0.278	3.336	8.973	0.37	0.002
77	3/9/2006	1:20:00	222.8	41.8	0.306	3.677	9.313	-0.39	-0.121
78	3/9/2006	1:25:00	222.9	41.37	0.292	3.507	9.221	0.38	0.149
79	3/9/2006	1:30:00	223	43.82	0.304	3.651	9.768	-0.37	-0.02
80	3/9/2006	1:35:00	223.1	40.97	0.292	3.503	9.138	-0.38	-0.116
81	3/9/2006	1:40:00	223.2	41.69	0.331	3.977	9.301	0.43	0.124
82	3/9/2006	1:45:00	223.2	42.96	0.303	3.637	9.584	0.38	0.001
83	3/9/2006	1:50:00	223.5	41.33	0.296	3.555	9.234	0.38	0.062
84	3/9/2006	1:55:00	223.2	40.99	0.28	3.364	9.143	-0.37	-0.178
85	3/9/2006	2:00:00	223.2	38.66	0.258	3.094	8.626	-0.36	-0.034
86	3/9/2006	2:05:00	223.4	40.74	0.283	3.397	9.099	0.37	0.012
87	3/9/2006	2:10:00	223.8	38.03	0.281	3.369	8.508	-0.4	-0.375
88	3/9/2006	2:15:00	223.8	39.33	0.252	3.029	8.799	0.34	0.035
89	3/9/2006	2:20:00	223.8	40.86	0.274	3.291	9.142	0.36	0.032
90	3/9/2006	2:25:00	223.9	38.56	0.251	3.011	8.627	-0.35	-0.095
91	3/9/2006	2:30:00	224.3	40.61	0.252	3.027	9.105	-0.33	-0.054
92	3/9/2006	2:35:00	224.6	36.93	0.217	2.609	8.292	0.31	0.134
93	3/9/2006	2:40:00	224.3	39.4	0.222	2.669	8.834	-0.3	-0.441
94	3/9/2006	2:45:00	224.6	36.22	0.234	2.813	8.133	-0.35	-0.389
95	3/9/2006	2:50:00	224.6	35.33	0.195	2.335	7.935	-0.29	-0.281
96	3/9/2006	2:55:00	224.7	31.53	0.199	2.393	7.083	-0.34	-0.07
97	3/9/2006	3:00:00	224.8	34.58	0.189	2.272	7.772	-0.29	-0.39
98	3/9/2006	3:05:00	225.9	34.64	0.197	2.367	7.825	-0.3	-0.001
99	3/9/2006	3:10:00	226.1	33.14	0.171	2.055	7.492	-0.27	-0.395
100	3/9/2006	3:15:00	226.3	28.15	0.139	1.667	6.366	-0.26	-0.175
101	3/9/2006	3:20:00	226.6	3.98	0.002	0.025	0.903	0.03	0.025
102	3/9/2006	3:25:00	226.7	4.89	0	0.001	1.108	0	0
103	3/9/2006	3:30:00	226.8	5.24	0	-0.002	1.19	0	0.004
104	3/9/2006	3:35:00	226.5	23.64	0.094	1.128	5.351	-0.21	-0.018
105	3/9/2006	3:40:00	226.5	29.5	0.173	2.071	6.676	-0.31	-0.334
106	3/9/2006	3:45:00	226.3	30.94	0.152	1.819	6.997	-0.26	-0.272
107	3/9/2006	3:50:00	226	35.62	0.162	1.947	8.047	-0.24	-0.338
108	3/9/2006	3:55:00	226.1	32.56	0.134	1.608	7.36	-0.22	-0.382
109	3/9/2006	4:00:00	226.3	34.8	0.136	1.628	7.873	-0.21	-0.483
110	3/9/2006	4:05:00	226.3	34.29	0.143	1.721	7.757	-0.22	-0.284
111	3/9/2006	4:10:00	226.3	32.89	0.118	1.421	7.439	-0.19	-0.193
112	3/9/2006	4:15:00	226.1	31.2	0.109	1.312	7.054	-0.19	-0.384
113	3/9/2006	4:20:00	226.2	35.21	0.095	1.139	7.962	-0.14	-0.263
114	3/9/2006	4:25:00	226.1	33.08	0.103	1.235	7.476	-0.17	-0.36
115	3/9/2006	4:30:00	226.2	34.01	0.1	1.194	7.688	-0.16	-0.501
116	3/9/2006	4:35:00	226.6	32.93	0.092	1.106	7.457	-0.15	-0.125
117	3/9/2006	4:40:00	226.8	33.64	0.108	1.294	7.626	-0.17	-0.215
118	3/9/2006	4:45:00	226.7	31.02	0.062	0.749	7.028	-0.11	-0.194
119	3/9/2006	4:50:00	226.6	30.74	0.094	1.127	6.961	-0.16	-0.268
120	3/9/2006	4:55:00	225.8	40.1	0.262	3.146	9.048	-0.35	-0.273
121	3/9/2006	5:00:00	224.6	42.01	0.29	3.483	9.431	-0.37	-0.098
122	3/9/2006	5:05:00	223.8	39.53	0.291	3.494	8.844	-0.4	-0.303
123	3/9/2006	5:10:00	223.2	42.91	0.28	3.356	9.574	-0.35	-0.27
124	3/9/2006	5:15:00	222.9	41.91	0.305	3.654	9.339	-0.39	-0.225

Record Number	Record Date	Record End Time	Chan 5 Avg. Volt	Chan 5 Avg. Amp	Chan 5 KW Hours	Chan 5 Avg. KW	Chan 5 Avg. KVA	Chan 5 Avg. PF	Chan 5 Avg. KVAR
125	3/9/2006	5:20:00	222.6	39.48	0.287	3.443	8.782	-0.39	-0.238
126	3/9/2006	5:25:00	221.9	40.9	0.275	3.299	9.07	0.36	0.048
127	3/9/2006	5:30:00	221.3	40.18	0.29	3.481	8.889	-0.39	-0.238
128	3/9/2006	5:35:00	221.1	41.78	0.291	3.492	9.233	-0.38	-0.298
129	3/9/2006	5:40:00	220.4	40.18	0.271	3.256	8.851	-0.37	-0.216
130	3/9/2006	5:45:00	220	39.78	0.275	3.304	8.75	-0.38	-0.167
131	3/9/2006	5:50:00	220.6	31.96	0.093	1.119	7.05	-0.16	-0.166
132	3/9/2006	5:55:00	222.6	32.1	0.072	0.865	7.142	-0.12	-0.239
133	3/9/2006	6:00:00	222.2	32.71	0.09	1.075	7.266	-0.15	-0.286
134	3/9/2006	6:05:00	221.5	32.73	0.069	0.829	7.248	-0.11	-0.068
135	3/9/2006	6:10:00	220.3	31	0.08	0.965	6.826	-0.14	-0.425
136	3/9/2006	6:15:00	219.5	32.14	0.058	0.699	7.051	0.1	0.056
137	3/9/2006	6:20:00	218.3	30.79	0.06	0.719	6.718	-0.11	-0.184
138	3/9/2006	6:25:00	218.2	32.41	0.056	0.673	7.067	-0.1	-0.256
139	3/9/2006	6:30:00	218	31.45	0.053	0.642	6.852	-0.09	-0.227
140	3/9/2006	6:35:00	217.7	32.69	0.021	0.253	7.114	-0.04	-0.069
141	3/9/2006	6:40:00	218.1	29.49	0.04	0.482	6.427	-0.07	-0.035
142	3/9/2006	6:45:00	218.4	30.09	0.039	0.468	6.568	0.07	0.004
143	3/9/2006	6:50:00	218.6	34.04	0.058	0.694	7.442	0.09	0.183
144	3/9/2006	6:55:00	219	34.75	0.053	0.634	7.608	0.08	0.001
145	3/9/2006	7:00:00	219.9	30.72	0.05	0.601	6.752	0.09	0.025
146	3/9/2006	7:05:00	221.4	32.16	0.027	0.328	7.12	-0.05	-0.31
147	3/9/2006	7:10:00	223.7	31.32	0.05	0.598	7.002	-0.09	-0.145
148	3/9/2006	7:15:00	224.5	30.6	0.038	0.452	6.865	0.07	0.088
149	3/9/2006	7:20:00	225.2	29.76	0.026	0.31	6.699	-0.05	-0.272
150	3/9/2006	7:25:00	226.2	29.26	0.041	0.487	6.618	-0.07	-0.304
151	3/9/2006	7:30:00	226.1	31.98	0.044	0.524	7.228	-0.07	-0.201
152	3/9/2006	7:35:00	226.6	32.26	0.047	0.559	7.307	-0.08	-0.06
153	3/9/2006	7:40:00	226.9	34.03	0.031	0.378	7.718	0.05	0.405
154	3/9/2006	7:45:00	227.1	29.97	0.05	0.598	6.803	-0.09	-0.445
155	3/9/2006	7:50:00	226.3	32.12	0.043	0.518	7.264	-0.07	-0.504
156	3/9/2006	7:55:00	226.6	32.99	0.052	0.629	7.473	0.08	0
157	3/9/2006	8:00:00	226	30.73	0.023	0.28	6.94	-0.04	-0.153
158	3/9/2006	8:05:00	225.3	28.18	0.008	0.101	6.345	-0.02	-0.075

Trough No 04

Record Number	Record Date	Record End Time	Chan 5 Avg. Volt	Chan 5 Avg. Amp	Chan 5 KW Hours	Chan 5 Avg. KW	Chan 5 Avg. KVA	Chan 5 Avg. PF	Chan 5 Avg. KVAR
1	3/8/2006	19:05:00	223.6	45.47	0.707	8.481	10.154	0.84	0.87
2	3/8/2006	19:10:00	225.5	0	0	0	0	1	0
3	3/8/2006	19:15:00	224.3	0	0	0	0	1	0
4	3/8/2006	19:20:00	223.4	0	0	0	0	1	0
5	3/8/2006	19:25:00	222.2	0	0	0	0	1	0
6	3/8/2006	19:30:00	221.8	0	0	0	0	1	0
7	3/8/2006	19:35:00	221.3	0	0	0	0	1	0
8	3/8/2006	19:40:00	220.9	0	0	0	0	1	0
9	3/8/2006	19:45:00	220.4	0	0	0	0	1	0
10	3/8/2006	19:50:00	220.1	0	0	0	0	1	0
11	3/8/2006	19:55:00	219.6	0	0	0	0	1	0
12	3/8/2006	20:00:00	218.5	0	0	0	0	1	0
13	3/8/2006	20:05:00	216.4	0	0	0	0	1	0
14	3/8/2006	20:10:00	214	0	0	0	0	1	0
15	3/8/2006	20:15:00	213.4	0	0	0	0	1	0
16	3/8/2006	20:20:00	213.5	0	0	0	0	1	0

Record Number	Record Date	Record End Time	Chan 5 Avg. Volt	Chan 5 Avg. Amp	Chan 5 KW Hours	Chan 5 Avg. KW	Chan 5 Avg. KVA	Chan 5 Avg. PF	Chan 5 Avg. KVAR
17	3/8/2006	20:25:00	213.4	0	0	0	0	1	0
18	3/8/2006	20:30:00	213.8	0	0	0	0	1	0
19	3/8/2006	20:35:00	213.5	0	0	0	0	1	0
20	3/8/2006	20:40:00	212.2	0	0	0	0	1	0
21	3/8/2006	20:45:00	212.5	0	0	0	0	1	0
22	3/8/2006	20:50:00	212.9	0	0	0	0	1	0
23	3/8/2006	20:55:00	213.6	0	0	0	0	1	0
24	3/8/2006	21:00:00	214.2	0	0	0	0	1	0
25	3/8/2006	21:05:00	212.5	0	0	0	0	1	0
26	3/8/2006	21:10:00	213.3	0	0	0	0	1	0
27	3/8/2006	21:15:00	214.7	0	0	0	0	1	0
28	3/8/2006	21:20:00	214.6	23.35	0.35	4.197	4.997	0.84	0.411
29	3/8/2006	21:25:00	214	53.21	0.847	10.162	11.39	0.89	1.258
30	3/8/2006	21:30:00	215.2	51.96	0.866	10.391	11.184	0.93	1.236
31	3/8/2006	21:35:00	215.8	52.19	0.859	10.308	11.262	0.92	1.124
32	3/8/2006	21:40:00	216.3	51.94	0.846	10.15	11.237	0.9	1.147
33	3/8/2006	21:45:00	216.2	52.87	0.863	10.354	11.434	0.91	1.066
34	3/8/2006	21:50:00	216.2	51.57	0.841	10.097	11.152	0.91	1.23
35	3/8/2006	21:55:00	219.2	50.96	0.841	10.096	11.172	0.9	1.048
36	3/8/2006	22:00:00	219.9	49.81	0.838	10.055	10.956	0.92	1.092
37	3/8/2006	22:05:00	220.6	50.99	0.836	10.038	11.248	0.89	1.128
38	3/8/2006	22:10:00	221.7	53.57	0.834	10.003	11.875	0.84	1.039
39	3/8/2006	22:15:00	221.9	50.85	0.833	9.994	11.285	0.89	1.108
40	3/8/2006	22:20:00	222.3	48.17	0.82	9.84	10.711	0.92	1.2
41	3/8/2006	22:25:00	223.6	49.5	0.827	9.929	11.068	0.9	1.139
42	3/8/2006	22:30:00	224.2	48.45	0.818	9.814	10.863	0.9	1.105
43	3/8/2006	22:35:00	225	49.58	0.821	9.851	11.159	0.88	1.029
44	3/8/2006	22:40:00	225.2	47.86	0.826	9.911	10.781	0.92	1.064
45	3/8/2006	22:45:00	224.5	48.18	0.806	9.669	10.816	0.89	1.055
46	3/8/2006	22:50:00	223.8	48.92	0.82	9.838	10.948	0.9	1.023
47	3/8/2006	22:55:00	223.8	48.64	0.818	9.811	10.89	0.9	1.074
48	3/8/2006	23:00:00	224.6	47.05	0.807	9.682	10.568	0.92	1.104
49	3/8/2006	23:05:00	225	47	0.813	9.75	10.574	0.92	1.053
50	3/8/2006	23:10:00	225.2	48.49	0.82	9.84	10.92	0.9	1.006
51	3/8/2006	23:15:00	224.8	47.68	0.797	9.567	10.72	0.89	1.103
52	3/8/2006	23:20:00	224.7	48.29	0.807	9.684	10.848	0.89	1.114
53	3/8/2006	23:25:00	225.1	47.92	0.811	9.738	10.79	0.9	1.096
54	3/8/2006	23:30:00	225.8	47.66	0.808	9.69	10.764	0.9	0.915
55	3/8/2006	23:35:00	226.4	47.63	0.807	9.686	10.785	0.9	1.15
56	3/8/2006	23:40:00	226.1	47.12	0.808	9.698	10.654	0.91	1.113
57	3/8/2006	23:45:00	226.4	46.71	0.798	9.58	10.575	0.91	1.082
58	3/8/2006	23:50:00	226.4	48.66	0.81	9.717	11.02	0.88	1.103
59	3/8/2006	23:55:00	226.9	47.42	0.804	9.645	10.761	0.9	1.094
60	3/9/2006	0:00:00	227	47.84	0.809	9.709	10.862	0.89	1.069
61	3/9/2006	0:05:00	227.2	47.36	0.791	9.492	10.761	0.88	1.068
62	3/9/2006	0:10:00	227.5	46.39	0.809	9.706	10.555	0.92	1.179
63	3/9/2006	0:15:00	227	48.3	0.818	9.812	10.963	0.89	1.184
64	3/9/2006	0:20:00	226.7	48.93	0.806	9.677	11.094	0.87	1.12
65	3/9/2006	0:25:00	226.3	48.07	0.806	9.67	10.88	0.89	0.943
66	3/9/2006	0:30:00	226.2	48.49	0.816	9.795	10.97	0.89	1.108
67	3/9/2006	0:35:00	225.8	48.69	0.803	9.642	10.997	0.88	1.208
68	3/9/2006	0:40:00	225.6	47.89	0.8	9.601	10.805	0.89	1.248
69	3/9/2006	0:45:00	225.1	47.92	0.806	9.669	10.788	0.9	1.153
70	3/9/2006	0:50:00	224.1	46.96	0.787	9.44	10.524	0.9	1.194
71	3/9/2006	0:55:00	224.2	48.37	0.807	9.679	10.844	0.89	1.208
72	3/9/2006	1:00:00	223.5	49.75	0.812	9.74	11.119	0.88	1.044

Karavita Tea Factory - Nivithigala.

Record Number	Record Date	Record End Time	Chan 5 Avg. Volt	Chan 5 Avg. Amp	Chan 5 KW Hours	Chan 5 Avg. KW	Chan 5 Avg. KVA	Chan 5 Avg. PF	Chan 5 Avg. KVAR
73	3/9/2006	1:05:00	223.8	48.85	0.809	9.711	10.934	0.89	1.192
74	3/9/2006	1:10:00	223.4	47.54	0.805	9.657	10.621	0.91	1.143
75	3/9/2006	1:15:00	223	48.43	0.809	9.707	10.805	0.9	1.109
76	3/9/2006	1:20:00	222.4	49.69	0.817	9.803	11.056	0.89	1.262
77	3/9/2006	1:25:00	222.9	47.38	0.796	9.556	10.562	0.9	0.968
78	3/9/2006	1:30:00	223	48.79	0.798	9.576	10.884	0.88	1.162
79	3/9/2006	1:35:00	223.1	49.65	0.809	9.713	11.08	0.88	1.24
80	3/9/2006	1:40:00	223.1	48.92	0.805	9.654	10.915	0.88	1.192
81	3/9/2006	1:45:00	223	48.47	0.81	9.715	10.812	0.9	1.049
82	3/9/2006	1:50:00	223.2	48.26	0.799	9.592	10.776	0.89	1.224
83	3/9/2006	1:55:00	222.9	47.95	0.811	9.734	10.692	0.91	1.19
84	3/9/2006	2:00:00	223.2	49.59	0.825	9.903	11.071	0.89	1.172
85	3/9/2006	2:05:00	223.5	47.87	0.804	9.648	10.7	0.9	1.228
86	3/9/2006	2:10:00	223.5	47.85	0.808	9.7	10.697	0.91	1.266
87	3/9/2006	2:15:00	223.7	48.29	0.822	9.867	10.803	0.91	1.272
88	3/9/2006	2:20:00	223.7	48.13	0.799	9.593	10.767	0.89	1.249
89	3/9/2006	2:25:00	223.9	47.77	0.808	9.702	10.698	0.91	1.177
90	3/9/2006	2:30:00	224.3	50.72	0.828	9.932	11.377	0.87	1.129
91	3/9/2006	2:35:00	224.3	49.34	0.816	9.788	11.069	0.88	1.116
92	3/9/2006	2:40:00	224.2	48.47	0.803	9.637	10.869	0.89	1.213
93	3/9/2006	2:45:00	224.4	46.41	0.775	9.304	10.417	0.89	0.878
94	3/9/2006	2:50:00	224.5	46.96	0.766	9.193	10.545	0.87	1.102
95	3/9/2006	2:55:00	224.8	44.31	0.742	8.905	9.961	0.89	0.992
96	3/9/2006	3:00:00	224.7	45.14	0.739	8.863	10.145	0.87	0.999
97	3/9/2006	3:05:00	225.9	41.86	0.708	8.49	9.461	0.9	0.697
98	3/9/2006	3:10:00	226	42.3	0.693	8.316	9.561	0.87	0.969
99	3/9/2006	3:15:00	226.3	25.88	0.411	4.93	5.849	0.84	0.335
100	3/9/2006	3:20:00	226.9	0	0	0	0	1	0
101	3/9/2006	3:25:00	226.8	0	0	0	0	1	0
102	3/9/2006	3:30:00	226.9	0	0	0	0	1	0
103	3/9/2006	3:35:00	226.8	0	0	0	0	1	0
104	3/9/2006	3:40:00	226.9	0	0	0	0	1	0
105	3/9/2006	3:45:00	226.3	25.09	0.408	4.894	5.674	0.86	0.55
106	3/9/2006	3:50:00	225.7	39.83	0.657	7.888	8.992	0.88	0.567
107	3/9/2006	3:55:00	226	39.21	0.629	7.552	8.865	0.85	0.693
108	3/9/2006	4:00:00	226.2	38.09	0.632	7.589	8.615	0.88	0.574
109	3/9/2006	4:05:00	226.1	37.22	0.592	7.106	8.418	0.84	0.609
110	3/9/2006	4:10:00	226.1	35.49	0.572	6.862	8.025	0.86	0.315
111	3/9/2006	4:15:00	226	34.85	0.554	6.653	7.876	0.84	0.26
112	3/9/2006	4:20:00	226.1	35.41	0.531	6.372	8.01	0.8	0.35
113	3/9/2006	4:25:00	226	31.62	0.495	5.934	7.147	0.83	0.103
114	3/9/2006	4:30:00	226	30.93	0.492	5.907	6.992	0.84	0.248
115	3/9/2006	4:35:00	226.6	30.05	0.476	5.717	6.812	0.84	0.126
116	3/9/2006	4:40:00	226.7	29.41	0.442	5.306	6.668	0.8	0.109
117	3/9/2006	4:45:00	226.6	31.44	0.43	5.161	7.127	-0.72	-0.19
118	3/9/2006	4:50:00	226.5	29.81	0.413	4.953	6.755	-0.73	-0.353
119	3/9/2006	4:55:00	225.5	44.83	0.737	8.847	10.107	0.88	1.103
120	3/9/2006	5:00:00	224.3	49.21	0.84	10.077	11.041	0.91	1.064
121	3/9/2006	5:05:00	223.6	51.19	0.836	10.026	11.451	0.88	1.179
122	3/9/2006	5:10:00	223.1	49.42	0.838	10.058	11.028	0.91	1.185
123	3/9/2006	5:15:00	222.7	51.56	0.852	10.224	11.486	0.89	1.369
124	3/9/2006	5:20:00	222.5	49.28	0.842	10.106	10.968	0.92	1.128
125	3/9/2006	5:25:00	221.7	50.52	0.845	10.135	11.202	0.9	1.378
126	3/9/2006	5:30:00	221.5	51.33	0.848	10.173	11.369	0.89	1.252
127	3/9/2006	5:35:00	220.7	52.19	0.863	10.358	11.521	0.9	1.375
128	3/9/2006	5:40:00	220.3	52.81	0.862	10.34	11.635	0.89	1.495

Record Number	Record Date	Record End Time	Chan 5 Avg. Volt	Chan 5 Avg. Amp	Chan 5 KW Hours	Chan 5 Avg. KW	Chan 5 Avg. KVA	Chan 5 Avg. PF	Chan 5 Avg. KVAR
129	3/9/2006	5:45:00	220	51.85	0.854	10.25	11.408	0.9	1.389
130	3/9/2006	5:50:00	220.3	23.86	0.358	4.292	5.255	-0.82	-0.109
131	3/9/2006	5:55:00	222.5	26.46	0.376	4.509	5.889	-0.77	-0.196
132	3/9/2006	6:00:00	221.6	26.83	0.349	4.189	5.951	-0.7	-0.254
133	3/9/2006	6:05:00	221.6	25.24	0.347	4.163	5.596	-0.74	-0.252
134	3/9/2006	6:10:00	220.3	24.54	0.329	3.953	5.409	-0.73	-0.262
135	3/9/2006	6:15:00	219.6	22.35	0.297	3.559	4.907	-0.73	-0.137
136	3/9/2006	6:20:00	218.5	22.01	0.287	3.442	4.811	-0.72	-0.287
137	3/9/2006	6:25:00	218.2	23.44	0.266	3.187	5.119	-0.62	-0.2
138	3/9/2006	6:30:00	218	24.83	0.275	3.306	5.417	-0.61	-0.471
139	3/9/2006	6:35:00	218	23.48	0.246	2.947	5.121	-0.58	-0.348
140	3/9/2006	6:40:00	218.2	23.74	0.241	2.894	5.186	-0.56	-0.234
141	3/9/2006	6:45:00	218.5	22.62	0.244	2.933	4.948	-0.59	-0.248
142	3/9/2006	6:50:00	218.7	21.5	0.222	2.659	4.704	-0.57	-0.315
143	3/9/2006	6:55:00	219	21.17	0.203	2.44	4.638	-0.53	-0.319
144	3/9/2006	7:00:00	220.1	21.42	0.205	2.457	4.717	-0.52	-0.23
145	3/9/2006	7:05:00	221.5	18.65	0.183	2.196	4.129	-0.53	-0.319
146	3/9/2006	7:10:00	223.9	17.38	0.164	1.971	3.894	-0.51	-0.359
147	3/9/2006	7:15:00	224.7	18.55	0.171	2.056	4.171	-0.49	-0.274
148	3/9/2006	7:20:00	225.3	17.03	0.154	1.843	3.847	-0.48	-0.312
149	3/9/2006	7:25:00	226.2	15.88	0.133	1.591	3.596	-0.44	-0.156
150	3/9/2006	7:30:00	226.5	12.74	0.146	1.753	2.885	-0.61	-0.172
151	3/9/2006	7:35:00	226.8	18.58	0.163	1.961	4.218	-0.46	-0.202
152	3/9/2006	7:40:00	227.1	13.85	0.148	1.775	3.149	-0.56	-0.083
153	3/9/2006	7:45:00	226.8	15.23	0.154	1.852	3.455	-0.54	-0.092
154	3/9/2006	7:50:00	226.7	16.98	0.148	1.778	3.852	-0.46	-0.08
155	3/9/2006	7:55:00	226.5	15.18	0.158	1.892	3.441	-0.55	-0.193
156	3/9/2006	8:00:00	226.1	16.68	0.164	1.972	3.781	-0.52	-0.174
157	3/9/2006	8:05:00	225.5	16.92	0.123	1.476	3.82	-0.39	-0.137
158	3/9/2006	8:10:00	226.2	17.16	0.142	1.709	3.889	-0.44	-0.081
159	3/9/2006	8:15:00	228.1	18.77	0.144	1.731	4.288	-0.4	-0.17
160	3/9/2006	8:20:00	182.4	12.35	0.093	1.113	2.821	-0.39	-0.244

2. Velocity at the Trough Inlet

Trough No 01

Time	Average Velocity ms ⁻¹
No load	8.34
8.30 pm	7.29
10.30 pm	6.79
12.30 pm	7.99
2.30 am	10.62
4.30 am	11.64
6.30 am	11.50

Trough No 02

Time	Average Velocity ms ⁻¹
No load	9.764
8.30 pm	7.479
10.30 pm	6.815
12.30 pm	8.471
2.30 am	11.180
4.30 am	11.260
6.30 am	11.340

Diameter of the Trough Inlet – 154 cm

(Inlet size of the trough 01 and 02 is equal)

3. Pressure inside the Troughs

Time	Trough 01					
	P11	P12	P13	P14	P15	P16
9.00 pm	0.52	0.4	0.34	0.34	0.4	0.4
10.30 pm	0.54	0.44	0.44	0.42	0.44	0.48
12.30 pm	0.6	0.5	0.48	0.48	0.5	0.5
3.00 am	0.46	0.34	0.3	0.3	0.34	0.42
5.00 am	0.42	0.28	0.25	0.26	0.28	0.32

Time	Trough 02					
	P21	P22	P23	P24	P25	P26
9.00 pm	0.48	0.4	0.38	0.36	0.4	0.42
10.30 pm	0.54	0.48	0.48	0.46	0.5	0.52
12.30 pm	0.56	0.48	0.48	0.48	0.5	0.52
3.00 am	0.4	0.36	0.34	0.34	0.36	0.37
5.00 am	0.42	0.32	0.28	0.28	0.3	0.34

4. Weight of the Green Leaf Samples

Time	Trough 01(g)					Trough 02 (g)				
	B ₁₁	B ₁₂	B ₁₃	B ₁₄	B ₁₅	B ₂₁	B ₂₂	B ₂₃	B ₂₄	B ₂₅
Initial	2000	1988	1984	1987	1998	1998	1988	1994	1996	1985
10.30 pm	1762	1752	1748	1725	1781	1780	1760	1764	1776	1787
12.30 am	1596	1597	1585	1566	1654	1631	1605	1603	1619	1647
2.30 am	1468	1475	1458	1446	1557	1519	1488	1476	1495	1544
4.30 am	1354	1365	1361	1365	1490	1398	1386	1352	1371	1440
6.30 am	1291	1306	1298	1290	1424	1303	1302	1266	1284	1357
8.30 am	1231	1243	1242	1229	1366	1246	1244	1205	1219	1291
Bin	300	288	284	287	298	298	288	294	296	285

